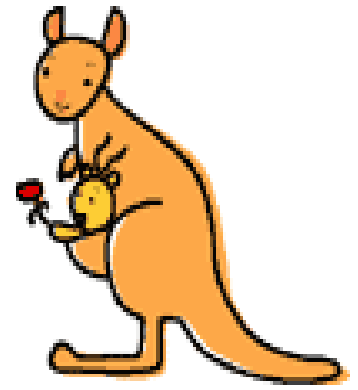




かん **か** がる -



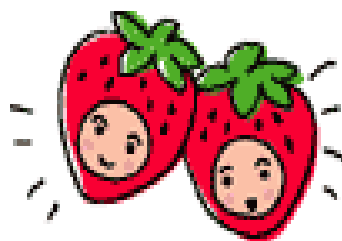
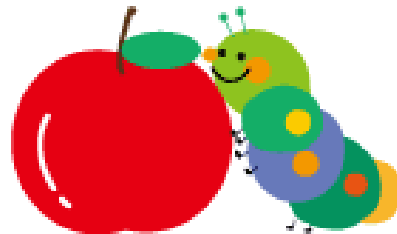
ペン **ぎ** ざん

も **ぐ** ら



くら **げ**

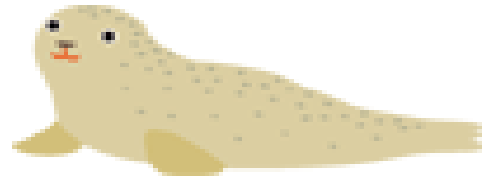
りん **し**



いち **し**

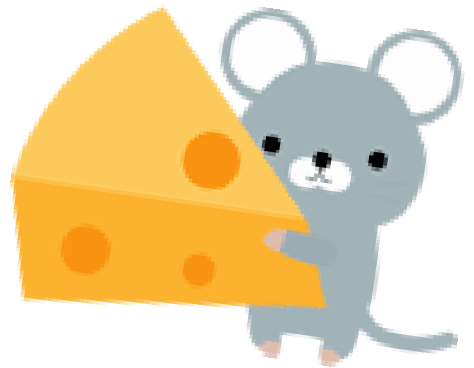


あざらし



にし

ねずみ



ちーず



ぶれ ぜんと



ぞう



ぱんだ



ち

づ

でんしゃ

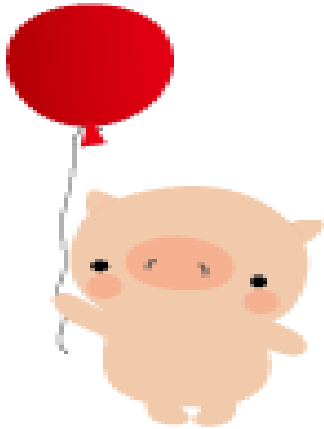


どんぐり



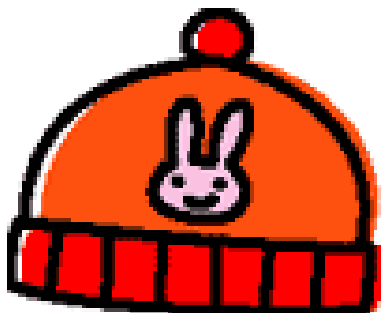
おばけ

はなび



ぶた

べんとう

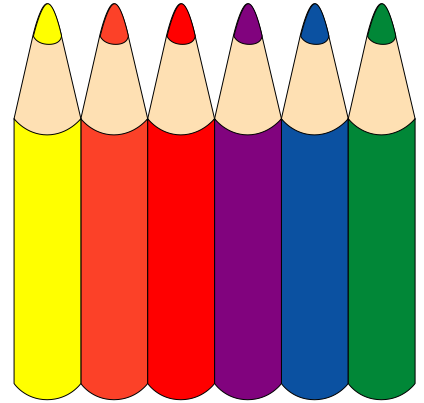


ぼうし

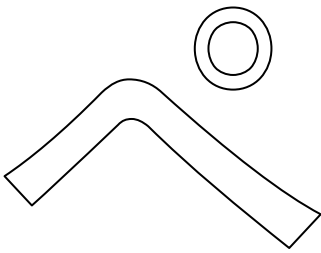


ぱんだ

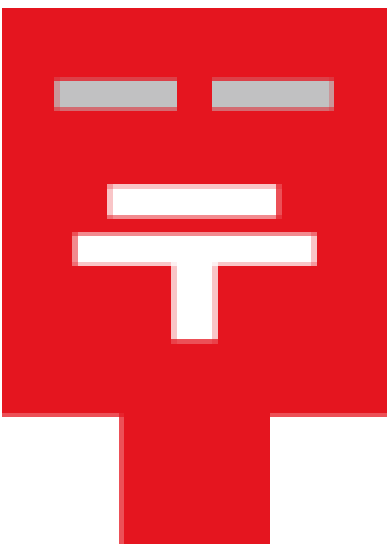
いろえんぴつ



ふれぜんと



んぎん



ぼすと